



Market Insight Release Notes  
2019 - June



## Table of Contents

<b>1. Executive Summary</b> .....	<b>3</b>
1.1 Target Audience .....	3
<b>2. New Features</b> .....	<b>4</b>
2.1 Running and rolling aggregations .....	4
2.2 Calculated Measures are now supported in CubeLookup expressions / Output Wizard .....	5
2.3 New TableInfo() expression function .....	6
2.4 * Wildcard returned to PatternMatch aggregation .....	6
2.5 Numeric variables are now allowed as ordering variables in PatternMatch algorithm .....	6
<b>3. Market Insight Orbit</b> .....	<b>7</b>
<b>4. Support</b> .....	<b>8</b>



## 1. EXECUTIVE SUMMARY

This document outlines the Market Insight (MI) features that are scheduled to be released to production in June 2019.

The key functional areas affected by this release are:

- **New aggregations in expressions:** Running and rolling aggregations deliver powerful analysis of your customers' transactions.
- **Cube calculated measures supported in output wizard and expressions:** These measures are now generated server side, allowing us to use them when exporting large cubes via the Output Wizard, or referencing cubes in an expression.

### 1.1 Target Audience

This document is intended for all users of Market Insight.



## 2. NEW FEATURES

### 2.1 Running and rolling aggregations

Market Insight now supports a new type of on-the-fly aggregation to more easily calculate running and rolling aggregations. This development makes this process quicker and easier to set-up.

- Running aggregation – will work out a value for this transaction from ALL the transactions up to and including it.
- Rolling aggregation – will work out a value for this transaction from a fixed number of transactions up to and including it.

The functions available are Minimum, Maximum, Sum and Average. With the Average function there are several options to control weighting on how important the previous transactions are.

The screenshot shows a configuration form for a new aggregation. The fields are as follows:

- Name:** Running Average(Policy Premium) [Save icon]
- Type:** Running/Rolling [Dropdown]
- Grouping Table:** Customers [Dropdown]
- Transactional Table:** Policies [Dropdown]
- Order records by:** Policy Inception Date [Text box]
- From:** Earliest to Latest [Dropdown]
- Pick the:** Policy Premium [Text box]
- Radio buttons:**  Running  Rolling
- Function:** Running Average [Dropdown]



## 2.2 Calculated Measures are now supported in CubeLookup expressions / Output Wizard

Previously when a cube that contains calculated measures is dragged onto an expression all calculated measures would be removed from the list of measures that could be looked up (as they weren't calculated on the MI servers).

In this release, the calculated measures will be available in the drop-down list of measures and can be used to create selections such as 'Select customers in the 3 counties with the highest average revenue'.

	Customers	Mean(Customer Level Revenue)	Rank Mean Revenue
Kinross-Shire	12	£28,635.94	1
Berwickshire	27	£26,368.76	2
London	5,840	£24,626.39	3
Belfast	459	£22,953.96	4

All the calculated measures that have server-side equivalents can be used in this way in the CubeLookup expression / Output Wizard. If these aren't yet supported a message is displayed to notify the user.



## 2.3 New TableInfo() expression function

A new expression function has been added which can return information about a given table. This has been renamed 'System Functions'. The syntax is: TableInfo("tableName", "property") where property is one of:

- NumRecords
- NumRecordsMatchParent
- MinMatches
- MaxMatches

There is scope to add more properties in the future if necessary.

## 2.4 \* Wildcard returned to PatternMatch aggregation

In the last release the PatternMatch aggregation was introduced. The \* wildcard was removed for this release but is supported again in this release.

## 2.5 Numeric variables are now allowed as ordering variables in PatternMatch algorithm

The ordering variable in the PatternMatch aggregation can now be a numeric variable or an ordinal selector (in addition to the already supported date/datetime).



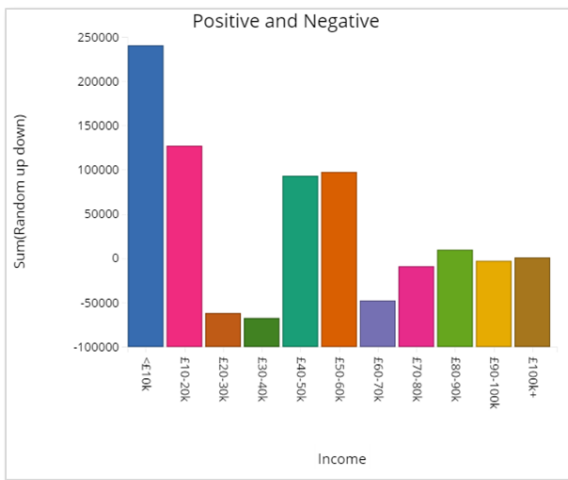
### 3. MARKET INSIGHT ORBIT

This section outlines the new features and improvements to Market Insight Orbit.

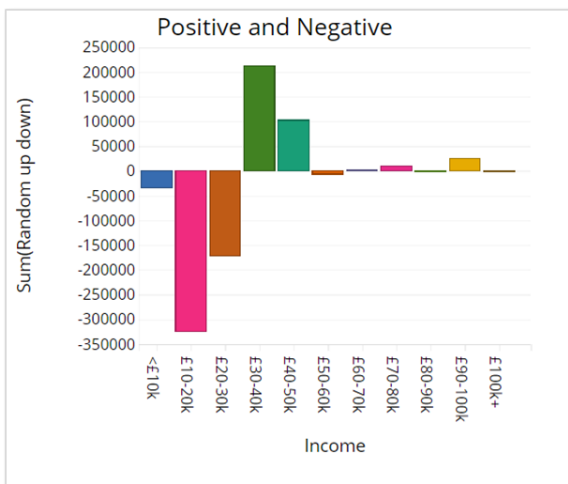
Displaying positive and negative values in storyboards and Orbit

Column and bar charts were affected in one dimension, and in two dimensions as clustered, stacked, stacked 100 and all the trellis configurations.

Before the fix (the bars don't start at zero)



After the chart copes with positive and values





#### 4. SUPPORT

Should you have any questions or need assistance, please contact the [UKCS@DNB.com](mailto:UKCS@DNB.com) team or by contacting your Customer Experience Representative.